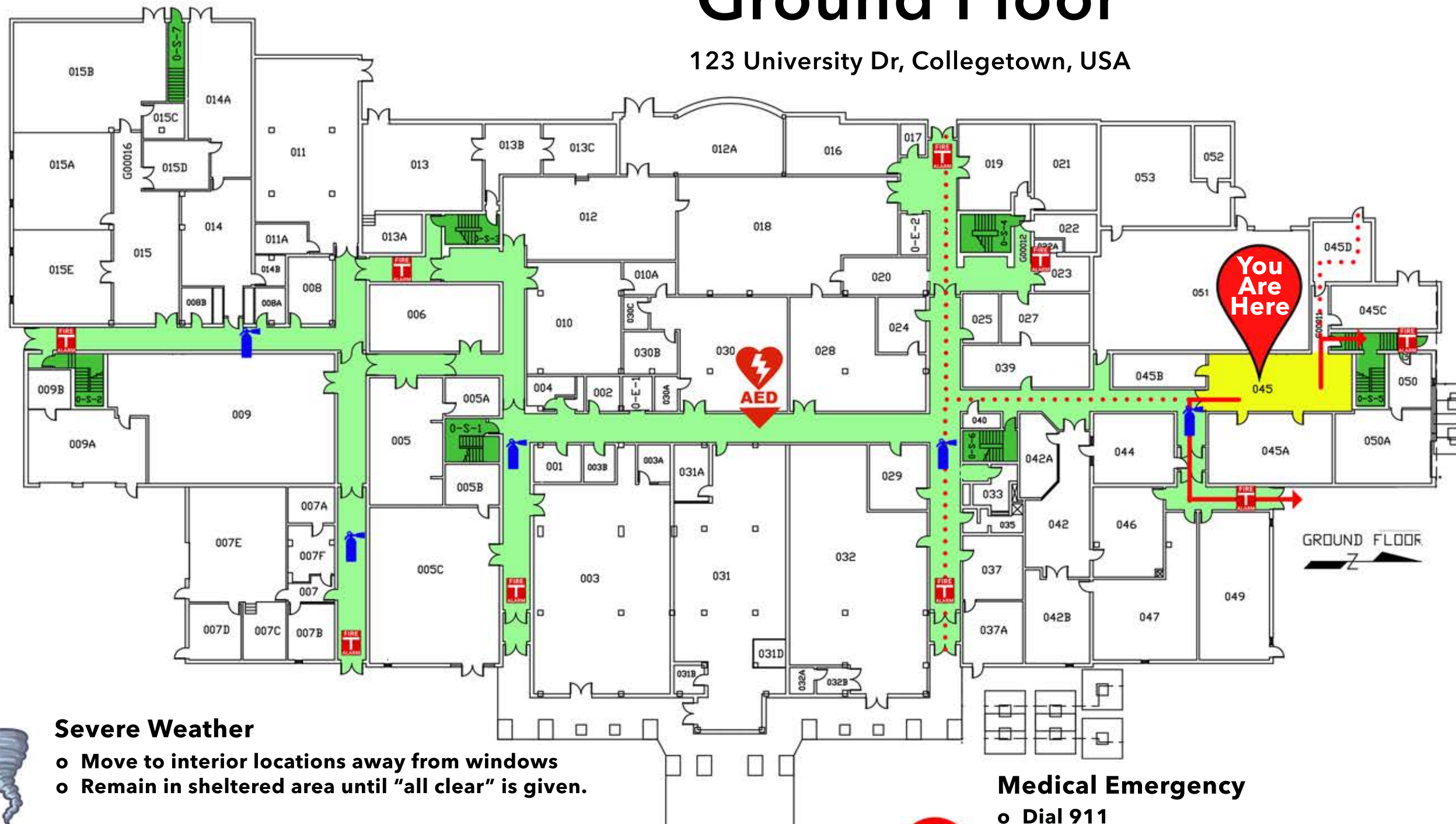


# University Hall Evacuation Plan Ground Floor

123 University Dr, Collegetown, USA



	Fire Extinguisher Location
	Fire Alarm Pull Station Location
	Stairway Location
	Primary Evacuation Route
	Secondary Evacuation Route
	Emergency Defibrillator



## Severe Weather

- o Move to interior locations away from windows
- o Remain in sheltered area until "all clear" is given.



## Fire Alarm

- o When the fire alarm activates start evacuating immediately to the emergency assembly point in parking lot 111.
- o Report to supervisor/instructor and wait for additional information
- o DO NOT REENTER UNTIL "ALL CLEAR" IS GIVEN.



## Fire/Emergency Notification

- o Activate the nearest pull station and alert others in your area.
- o Call 911 once you have exited the building.



## Medical Emergency

- o Dial 911
- o Provide assistance if trained
- o Assign individual to meet emergency responders and escort to location
- o Notify Deans Office



## Handicapped

- o If possible assist those who are mobile to evacuate.
- o When safe, move those who are not able to evacuate to a stairwell
- o Alert emergency responders that there are individuals who could not evacuate and give them location.